



**KOMISI
PEMILIHAN
UMUM**



INCLUSIVE ELECTORAL EDUCATION THROUGH INFORMAL EDUCATION CHANNEL

Hasyim Asy'ari

General Election Commission of The Republic of Indonesia

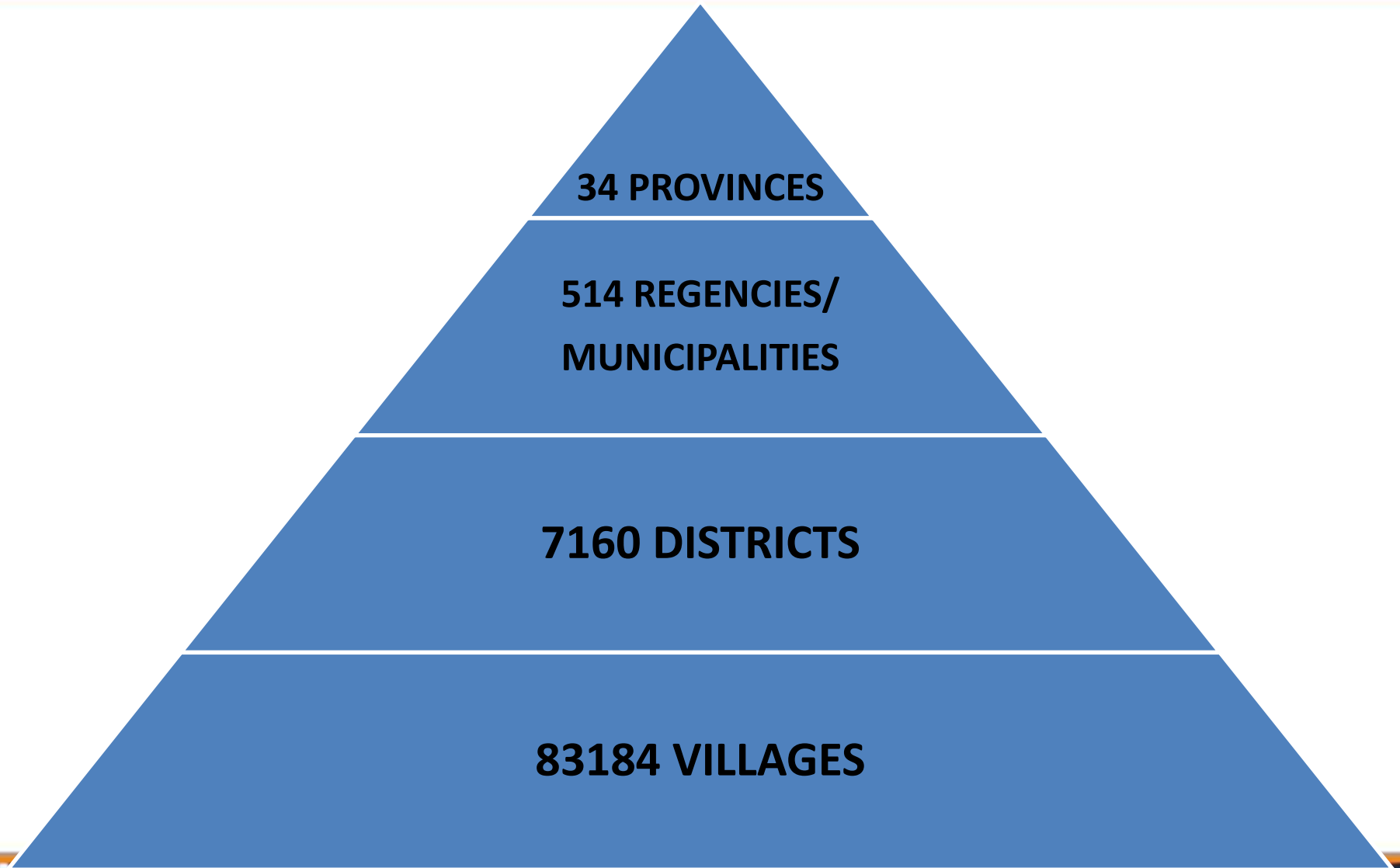


INDONESIA MAP





INDONESIA





INDONESIA ELECTIONS

- Probably the most complex electoral event globally
- 479,183 polling stations across 17,000 islands
- 34 provinces, 514 regencies/municipalities, 7,160 districts, 83,184 sub-districts/villages
- 4 million polling station officials
- 700 ballots, 2,450 ballot designs
- 19,700 candidates, 1 presidency, 532 legislatures
- Population: 237.56 million (census 2010)
- 2014 voters list: 187,847,512
- 2014 turnout rate: 75.11%



Legal Framework

- Constitution of Indonesia (UUD 1945)
- *Reformasi* movement resulted to the significant amendments of the Constitution: human rights & concept of election
- Legislative framework governing democratic representation:
 - Law 15/2011 governing election management bodies
 - Law 8/2012 governing legislative elections
 - Law 42/2008 governing presidential elections
 - Law 2/2011 governing political parties
 - Law 27/2009 governing the structure of national and sub-national legislatures
 - Law 23/2014 governing regional administration
 - Law 1/2015 governing local election
 - Law 8/2015 governing local election (1st revised of Law 1/2015)
 - Law 10/2016 governing local election (2nd revised of Law 1/2015)



ELECTIONS in INDONESIA

Parliamentary Election :

- Regional Representative Council
- People's Representative Council
- Peoples Regional Representative Council

Presidential Election

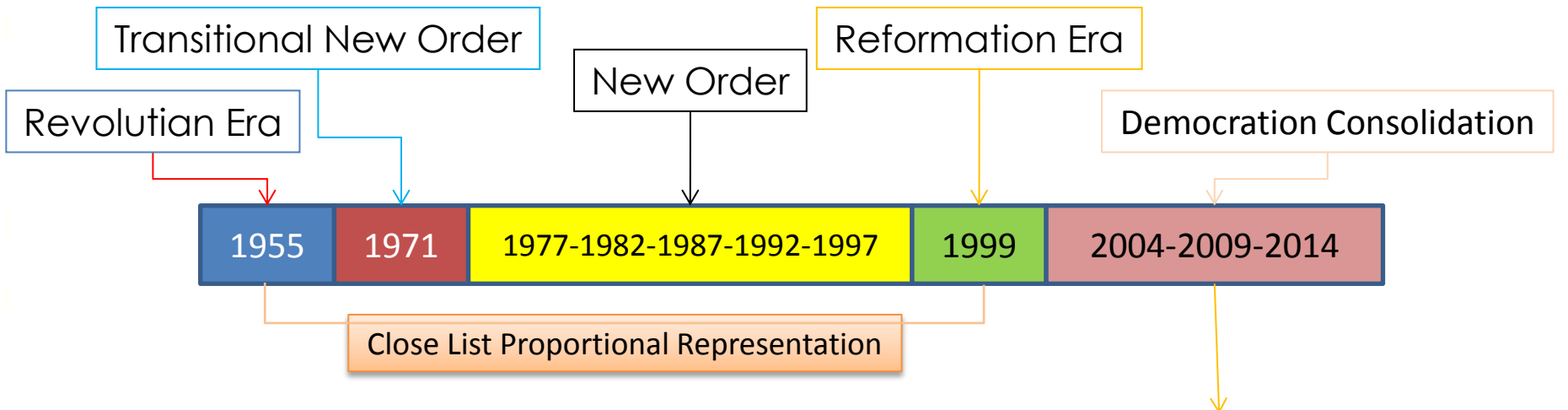
Concurrent Governor and Regent/Mayor Election



This elections was held once in five years



INDONESIAN ELECTION SYSTEM MODEL (11 TIMES ELECTIONS)



For Presidential Election :

1955-1999 : Elected by HR

**2004-2009-2014 : Elected by Voters by
Two Round System**

**National HR, Provincial HR, and District
(Mun/City) HR = open list PR
2004 = Candidate Number Order
2009-2014 = Most Voted
Provincial Representative = SNTV (single
non transferable vote)**



LEGISLATIVE ELECTIONS

- From 1998 until now, there had been four legislative elections held, they are 1999, 2004, 2009 and 2014 elections. Legislative elections on April 9, 2014 included:
 - House of Representatives (DPR) & Regional Representatives Council (DPD)
 - National Level: DPR - 560 seats from 77 electoral district & DPD - 132 seats from 33 provinces
 - Provincial Level: 2,112 seats from 259 constituencies
 - Regency Municipality level: 16,895 seats from 2,102 constituencies
 - All elected at the same day, requiring 4 different ballots during the Election Day



LEGISLATIVE ELECTIONS

Seats Allocation

- 2009 election vs 2014 election

Gender Quota:

- 2004 election: 30% women in candidate list
- 2009 election: 30% women with at list one women within three candidates, no binding sanction
- 2014 election: 30% women with at list one women within three candidates, with binding sanction



PRESIDENTIAL ELECTIONS

- President as Head of Executive elected directly by the people
- Maximum two five-year term of service
- Min 25% of total vote required for a party or coalition to nominate candidate pairs
- Candidate who receives >50% wins the election
- Run-off election between top two candidates if no one reaches the 50% threshold in round one



LOCAL ELECTIONS

- Local election is an election to select head of regional.
- Previously, the date of local election different from one region to another. By the Law Number 8 Year 2015, government decide to conduct local election from regions concurrently.
- The schedule of concurrent local elections is designed to accommodate the end of term of each regional head. The end of term varies as previously each region conducted local elections in different dates.
- Concurrent local elections for all regions in Indonesia is designed to be conducted in 2027.

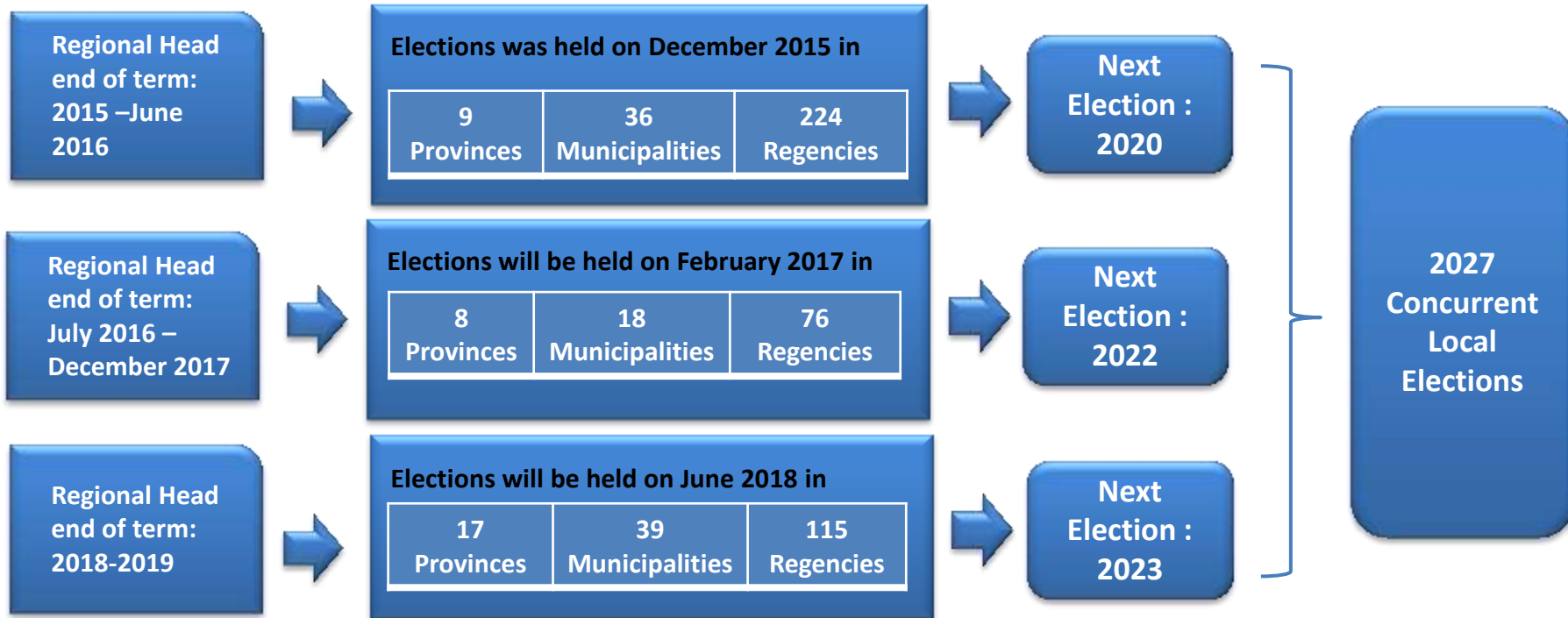


LOCAL ELECTIONS

- Gubernatorial election: electing head executive of a province with min 30% of total votes
- Regency/Municipality election: electing head executive of a regency/municipality
- Kecamatan appointments by the Regent/Mayor at regency/municipality level
- Ward/village appointments and elections
 - The head of Kelurahan is a civil servant appointed by the sub-district head
 - The head village is a civilian directly elected by villagers in locally organized elections



Schedule of Concurrent Local Elections





POLITICAL PARTIES IN INDONESIA

- Indonesia is multi-party system with 73 registered political parties
- Each political parties must undergo registration and verification to run in election
- 2009 election: 38 national parties + 6 Acehese political parties
- Amendment of electoral law set high requirements for political parties to run in election
- 2014 election: 12 national parties + 3 Acehese political parties
- Nonpartisan candidates are only allowed to compete for the 132 DPD seats and for governor, regent, mayor and village



POLITICAL PARTIES IN INDONESIA

PESERTA PEMILU TAHUN 2004



harisanto.wordpress.com

Year 2009
44 POLITICAL PARTIES



PARTAI-PARTAI PESERTA PEMILU 2009 (detail partai sesuai dengan politiknya di bawah)

1. Partai Hati Nurani Rakyat (HANURA)	2. Partai Keadilan Sejahtera (PKS)	3. Partai Persatuan Pembangunan (PPP)	4. Partai Persatuan Rakyat Indonesia (PIRI)	5. Partai Persatuan Sarung (PPS)	6. Partai Nasional (PAN)	7. Partai Keadilan dan Perdamaian (PKP)	8. Partai Kebangkitan Bangsa (PKB)
9. Partai Nasional (PAN)	10. Partai Keadilan Sejahtera (PKS)	11. Partai Persatuan Pembangunan (PPP)	12. Partai Demokrasi Indonesia Perjuangan (PDI Perjuangan)	13. Partai Kebangkitan Bangsa (PKB)	14. Partai Persatuan Sarung (PPS)	15. Partai Nasional (PAN)	16. Partai Demokrasi Indonesia Perjuangan (PDI Perjuangan)
17. Partai Keadilan Sejahtera (PKS)	18. Partai Keadilan Sejahtera (PKS)	19. Partai Keadilan Sejahtera (PKS)	20. Partai Keadilan Sejahtera (PKS)	21. Partai Keadilan Sejahtera (PKS)	22. Partai Keadilan Sejahtera (PKS)	23. Partai Keadilan Sejahtera (PKS)	24. Partai Keadilan Sejahtera (PKS)
25. Partai Keadilan Sejahtera (PKS)	26. Partai Keadilan Sejahtera (PKS)	27. Partai Keadilan Sejahtera (PKS)	28. Partai Keadilan Sejahtera (PKS)	29. Partai Keadilan Sejahtera (PKS)	30. Partai Keadilan Sejahtera (PKS)	31. Partai Keadilan Sejahtera (PKS)	32. Partai Keadilan Sejahtera (PKS)
33. Partai Keadilan Sejahtera (PKS)	34. Partai Keadilan Sejahtera (PKS)	35. Partai Keadilan Sejahtera (PKS)	36. Partai Keadilan Sejahtera (PKS)	37. Partai Keadilan Sejahtera (PKS)	38. Partai Keadilan Sejahtera (PKS)	39. Partai Keadilan Sejahtera (PKS)	40. Partai Keadilan Sejahtera (PKS)
41. Partai Keadilan Sejahtera (PKS)	42. Partai Keadilan Sejahtera (PKS)	43. Partai Keadilan Sejahtera (PKS)	44. Partai Keadilan Sejahtera (PKS)	45. Partai Keadilan Sejahtera (PKS)	46. Partai Keadilan Sejahtera (PKS)	47. Partai Keadilan Sejahtera (PKS)	48. Partai Keadilan Sejahtera (PKS)

YEAR 2004
24 POLITICAL PARTIES

Year 2014
15 POLITICAL PARTIES

PARTAI POLITIK PESERTA PEMILU 2014

1	2	3	4	5	6
7	8	9	10	14	15



COMPARATION

	ELECTION 2004	ELECTION 2009	ELECTION 2014
Political Parties	24	44 (38 National + 6 Local)	15 (12 National + 3 Local)
Voters	148.000.368	171.265.442	187.847.512
Turn Out	84.07%	71%	75,11%
Poling Places (TPS)	581.393	519.920	545.778



Indonesia's Electoral Management Bodies

Unlike other countries, Indonesia has 3 (three) EMBs with different functions:

THE GENERAL ELECTION COMMISSION (KPU)

- KPU is electoral management body that is responsible for conducting elections

THE ELECTION SUPERVISORY BOARD (BAWASLU)

- Bawaslu is electoral management body that is responsible for supervising electoral conduct and the first gateway and adjudicator of electoral disputes

THE HONORARY COUNCIL OF ELECTION MANAGEMENT BODIES / THE EMB ETHICS COUNCIL (DKPP)

- DKPP is electoral management body that is responsible for resolving allegations of ethical violations conducted by either KPU or Bawaslu



Indonesia's Electoral Management Bodies

General Election Commission (KPU)

- Independent election management body responsible to conduct national and regional elections
- President inaugurated 7 selected KPU commissioners for 5-year term of service
- The KPU secretariat at national and regional level
- The KPU civil servant staff: approximately 13,865 staff and 2,659 Commissioners in 531 offices across Indonesia



Indonesia's Electoral Management Bodies

Election Oversight Body (Bawaslu)

- In charge of overseeing that an electoral complaint is directed to the appropriate body and resolved correctly:
 - Criminal -> police
 - Administrative -> KPU
- 5 Commissioners elected for 5-year term
- Power provided to Bawaslu by Law 8/2012
- Provisions in Law 15/2011 establishes the Bawaslu and the KPU as equal and separate institutions
- Bawaslu secretariat at national and regional level
- A type of oversight body that is unique to Indonesia



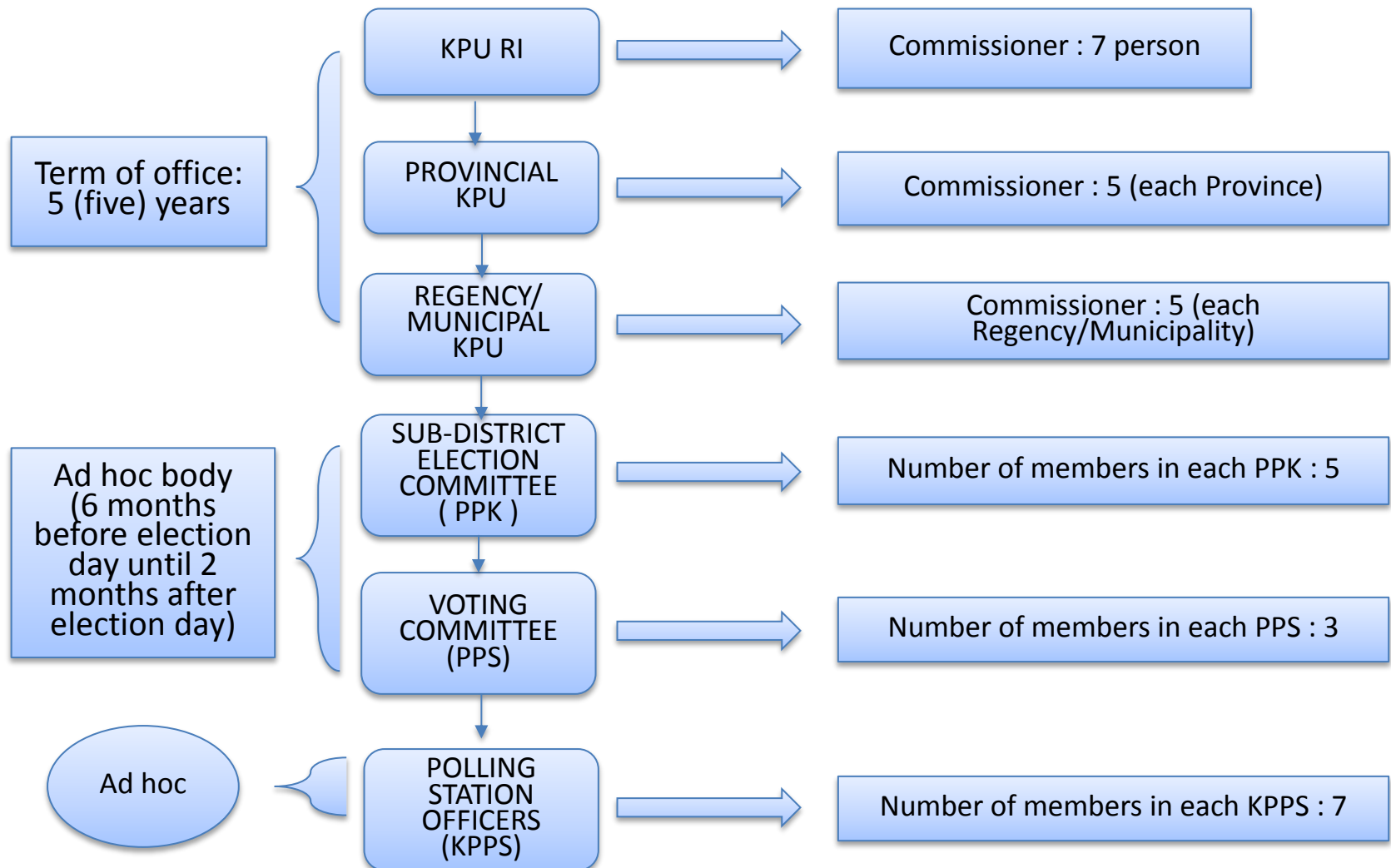
Indonesia's Electoral Management Bodies

Honorary Council of Election Management Bodies (DKPP)

- National-level ethics council to review and decide upon reports of alleged violations of the code of ethics committed by members of the KPU and Bawaslu
- Established within two months after the inauguration of KPU and Bawaslu commissioners
- 7 members: 1 from KPU, 1 from Bawaslu, and 5 community leaders; 5-year term
- Unique to Indonesia, has powers to recommend commissioners' dismissal. Its rulings are final and binding



General Election Commission Hierarchy





OVERSEAS AD-HOC ELECTION COMMITTEES UNDER KPU

OVERSEAS ELECTION COMMITTEE (PPLN)



Total Number of Committees: 130
Total Number of Officers: 650 (5 each)
Total Number of Secretariat Workers: 390

OVERSEAS POLLING STATION OFFICER (KPPSLN)



KPPSLN: 7 each x 498 = 3,486 officers

OVERSEAS VOTER DATA UPDATE OFFICER (Pantarlih LN)

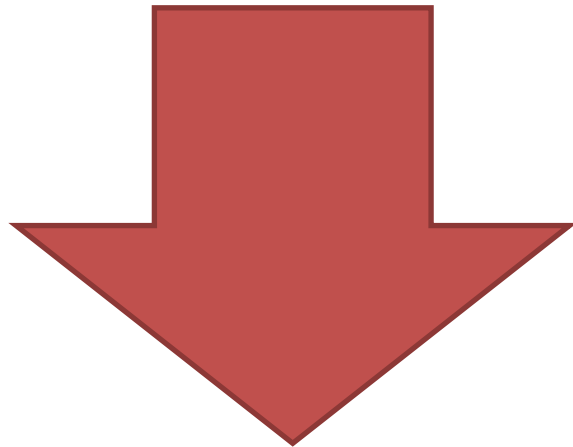


PANTARLIH LN: 1 each
Total number of officer 130 PPLN = 873 officers (2013)

A PPLN reports directly to the national KPU



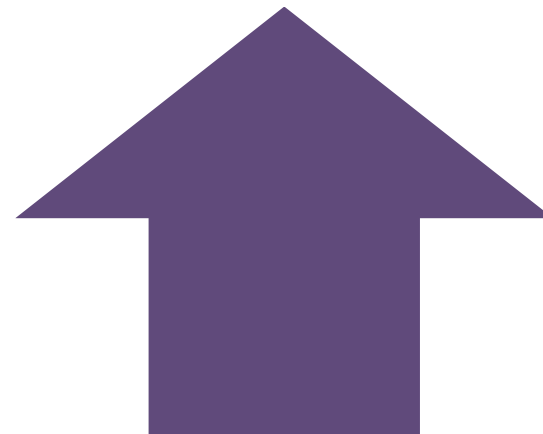
SCOP PROGRAM OF VOTER EDUCATION



Non-Electoral
Period → Civic
Education

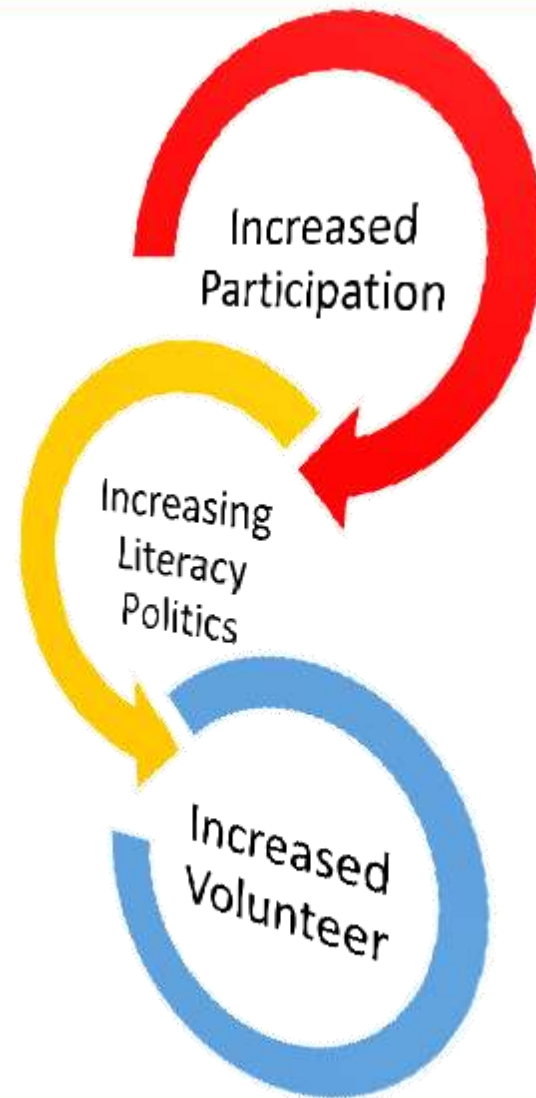


Electoral
Period
→ Voter
Education





GOALS OF VOTER EDUCATION





GROUP TARGET

Cluster I: General

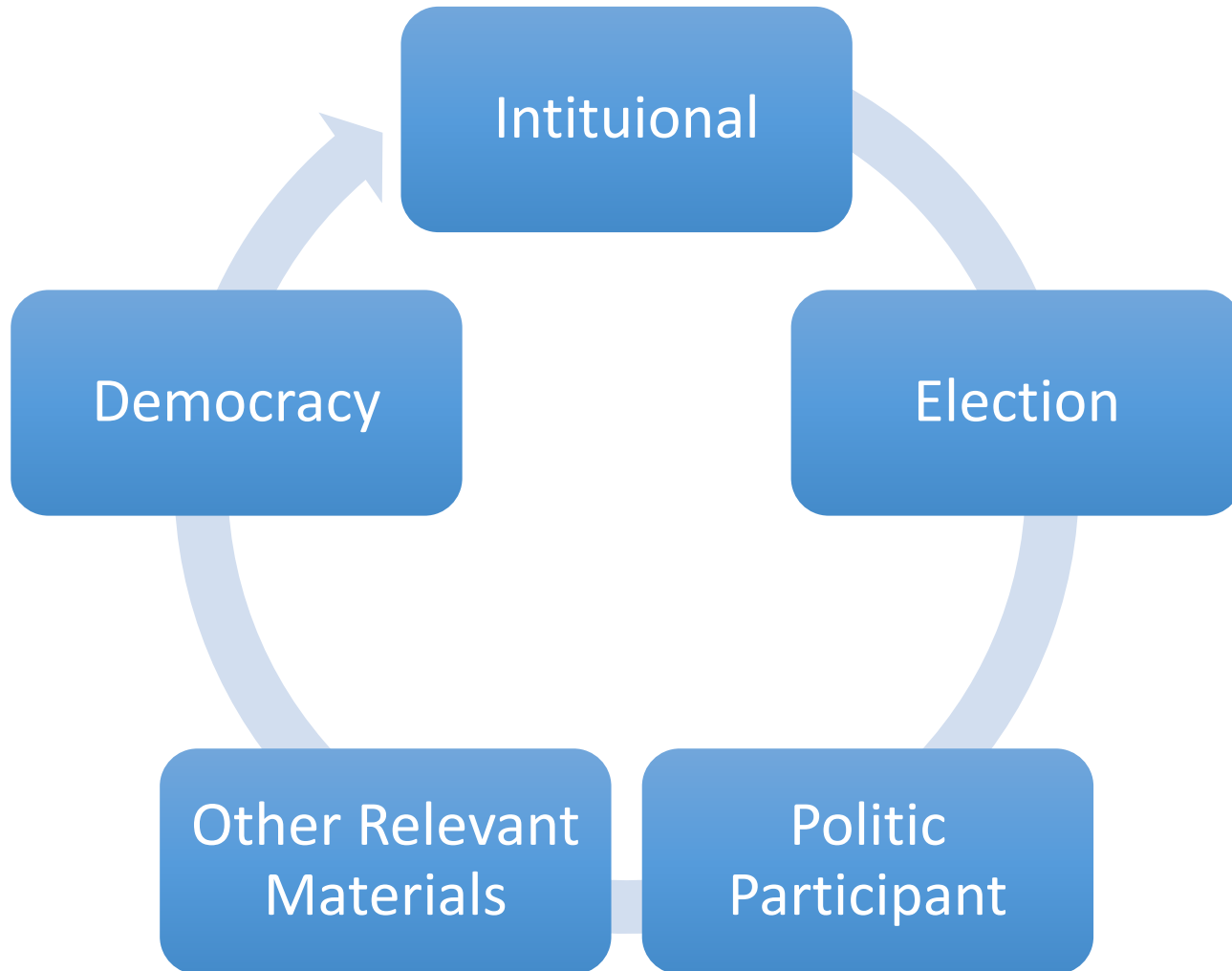
- Young Voters
- Women
- Disability and Marginal
- Religion

Cluster II: Contextual

- Regional voter turnout low
- Regional potential conflict of election violation
- Conflict region



MATERIAL of VOTER EDUCATION





Role of Communication and Technology for Voter Education

- Role of ICT implementation in election:
 - Increase administrative efficiency
 - Reduce long-term costs
 - Enhance political transparency
 - Ensure citizen's rights of Public Information
 - Encourage public participation in decision process
 - Increase citizen role and participation in the electoral process



Role of Communication and Technology for Voter Education

- ICT solutions used by the KPU:
 - SIDALIH (Voter Registration Information System)
Largest national voter database in the world
 - SITAP (Election Stage Information System)
Collects data from all stages of election
 - SILON (Candidacy Information System)
 - SITUNG (Vote Counting Recapitulation Information System)
Collect scanned image of election result from polling station
Tabulate polling station results into preliminary result
Encourage public crowdsourcing initiative to tabulate election results based from scanned image displayed in KPU website:
kawalpemilu.org and kawalpilkada.org



Voter Education in Curricula & Extra Curricula

Building electoral organizer capacity

- Strategy to encourage Public Participation: ensure KPU's policy and practices are sensitive to voter participation
- Professionalism is key to successful election, obtained through:
 - Building Resources in Democracy, Governance and Elections (BRIDGE) trainings
 - Technical Guidance
 - Providing scholarship for Master's Degree on Electoral Management Study Program (in cooperation with 9 state universities)
 - Giving "KPU Award" for excellent local KPUs



Inclusive Electoral Education Through Informal Education Channel

- Educate a broad range of stakeholders and “special” groups of voter about the importance of being a voter
 - Women voters
 - First-time voters: “KPU Goes to Campus”
 - Voters with disability:
 - Braille template ballot paper
 - Technical guidance for accessible polling station for voters with disability
 - Voter education for people with disability
 - Potentially marginalized voters



Inclusive Electoral Education Through Informal Education Channel

Synergy with Civil Society Organization (CSO)

- Establishment of Voter Education Media Center (VEMC) in collaboration with national CSOs
- Improved information on election processes and engaged the public more directly in voter outreach
- Distributed KPU materials; hosted interactive public discussions; and supported multi-media voter education campaigns
- Consolidated guidance and lessons products learned from the 2014 elections



ACCESSIBLE ELECTION FOR VOTER WITH DISSABILITIES

- KPU has committed to conduct accessible election for voter with disabilities.
- As an institution that have authorities on conducting the election, KPU makes efforts to protect and fulfilled citizen with disability rights on politics, by :
 - Issuing Regulation which inclusively giving affirmative action for voter with disability
 - Cooperate with other institution and stakeholders concern on disability



KPU giving affirmative action to voter with dissability in all Electoral Stages

1. REGULATION DRAFTING PROCESS STAGE

- KPU working with all stakeholder to collect aspirations and recommendations regarding how to make an accessible elections for voters with disabilities
- KPU have a MoU with PPUA Penca to provide a better accessible elections.
- KPU already increasing cooperation with disability organization in formulating KPU regulation relating to disabled voters
- Example of KPU regulation for accessible election
 - ❑ **one of Election Socialization target is voter with dissabilities**
(Regulation of KPU Number 5 Year 2015 on Socialization and Citizen Participation)
 - ❑ **Polling Station has to be accessible for voter with dissabilities**
(Regulation of KPU Number 6 Year 2015 on Norms, Standard, Procedure, Procurement and Distribution of Election Logistic)
 - ❑ **KPU giving access to citizen with dissabilities on public debate for President candidate**
(Regulation of KPU Number 7 Year 2015 on Campaign)
 - ❑ **Physical and spiritual requirements can not detered citizen with dissabilities on any candidacy** *(Regulation of KPU Number 9 year 2015 on Candidacy)*



2. Voter Registry Stage

- The fixed voter list should include all eligible Indonesian citizens without exception.
- The KPU Regulation about voter registry mentions that the voter information must include the information about the type of disability a voter has.
- Information about the type of voters' disabilities is very important to provide proper service during polling.

DATA PEMILIH TETAP POLKINDA SERENTAM TAHUN 2015.

Provinsi	Jumlah Pemilih			Jumlah Pemilih Total (Memb. 2015)			Jumlah Pemilih dengan Cacat					Total (%)
	L	P	Baru	L	P	Total (%)	1	2	3	4	5	
1. ACEH	186	8472	1743	10664	244	2738	4678 (11%)	47	27	33	33	30
2. SUMBAWA	633	14838	3224	18695	2400	2423	4678 (11%)	47	27	33	33	30
3. BENGKULU	146	12176	1545	14267	2442	2454	2588 (18%)	105	38	146	111	207
4. JAWA BARAT (TANJUNGPINRANG)	537	12447	27124	13514	14847	14839	2121 (15%)	223	85	101	122	171
5. BANTEN	128	2423	1433	4178	1015	121	622 (15%)	33	29	38	33	37

number of
polling
stations

number of
voters

number of
first-time
voters

Number of Voter with Dissability

1. Number of Voters with physical impairment
2. Number of Voters with vision impairment
3. Number of Voters with hearing impairment
4. Number of Voters with mental disability
5. Others



3. SOSIALIZATION STAGE

- Voters with disabilities are one of KPU's main priorities for targeted voter education, besides first-time voters and female voters.
- Electoral information dissemination was provided through the mass media and KPU's website.
- KPU has a module and socialization and voter education materials especially for disabled voters.
- KPU has a specific budget to educate voters with disabilities (brosure, leaflet and other education materials)
- KPU collaborate with TV Station in broadcasting President and Vice President debate, where in the debate there is also sign-language interpreter

Sign-language
interpreter





3. VOTING STAGE

KPU Regulation explain things as follows :

- In a notice to vote at the polling stations should be mentioned the ease for people with disabilities in voting at the polling stations.
- Table / board of voting booth and for marking the ballot, and table with empty space beneath it for people with disabilities using wheelchairs.
- The entrance and exit polling at least 90cm sized in order to ensure access for people with disabilities motion using a wheelchair.
- Location of polling stations should be easily accessible, in a flat place that is not rocky, not hilly, not thick grassy, not jump over ditches and exhibits the stairs





MONITORING FINDINGS

Inaccessible



PATHWAYS

30%

70%

Accessible pathway to the polling stations for persons with disabilities

Accessible



Inaccessible



LOCATION

32%

68%

Locations must be accessible by wheelchair user and the elderly

Accessible



Inaccessible



ENTRANCE

16%

84%

Entrance should be at least 90 cm in with in order to guarantee access for wheelchair user

Accessible





MONITORING FINDINGS



EXIT



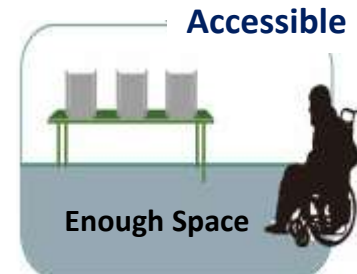
Exit should be at least 90 cm in with in order to guarantee access for wheelchair user



SPACE



Space to maneuver inside the polling station



BOOTH



Voting booth table with an empty space underneath for easy access for wheelchair user





MONITORING FINDINGS

Inaccessible



BALLOT BOX

34%

66%

Ballot box table with sufficient height for easy access for wheelchair user

Accessible



Inaccessible



BRAILLE TEMPLATE

35%

65%

Availability of braille template at polling stations

Accessible





BRAILLE TEMPLATE FOR BALLOT PAPER

KPU designed and produced electoral information dissemination materials in Braille format for voters with vision impairment

ALAT BANTU COBLOS
PEMILIH TUNANETRA

 **SURAT SUARA** 

PEMILIHAN
BUPATI DAN WAKIL BUPATI
(CETAK NAMA KABUPATEN)
(CETAK NAMA PROVINSI)
TAHUN 2015

APAKAH ANDA SETUJU ATAU TIDAK SETUJU
PABANGGALAN (CETAK NAMA CALON)
DAN (CETAK NAMA CALON WAKIL)
MENJADI BUPATI DAN WAKIL BUPATI
PERIODE 2015-2020

SETUJU	TIDAK SETUJU
<input type="checkbox"/>	<input type="checkbox"/>

ALAT BANTU COBLOS
PEMILIH TUNANETRA

 **SURAT SUARA** 

PEMILIHAN
BUPATI DAN WAKIL BUPATI
(CETAK NAMA KABUPATEN)
(CETAK NAMA PROVINSI)
TAHUN (CETAK TAHUN)

1	2
<input type="checkbox"/> CALON BUPATI NAMA CALON BUPATI	<input type="checkbox"/> CALON BUPATI NAMA CALON BUPATI
<input type="checkbox"/> CALON WAKIL BUPATI NAMA CALON WAKIL BUPATI	<input type="checkbox"/> CALON WAKIL BUPATI NAMA CALON WAKIL BUPATI



COOPERATION WITH INSTITUTION CONCERN TO DISSABILITY

- **National Commission of Human Rights (KOMNAS HAM)**
 - During the election, KOMNAS HAM reporting issues on human rights violation on election. KPU following up the issues for ensuring political rights for citizen with dissabilities.
- **AGENDA**
 - The General Election Network for Disability Access (AGENDA) was established in 2011 as a forum to improve access to political and electoral opportunities for persons with disabilities in Southeast Asia.
 - It developed a training module and the EMB self-assessments to help EMBs prepare for the conduct of accessible elections to increase awareness.
- **Center for Election Access of Citizens with Disabilities (PPUA-PENCA)**
 - KPU worked with PPUA-PENCA to create political education for people with disabilities and consult them on electoral procedures to ensure the election is more accessible for everyone.
 - KPU also work together with PPUA PENCA on designing *braille template* for ballot paper.
- **Forum for Integration and Advocacy for Citizens with Dissabilities (SIGAB)**
 - KPU worked with CSO concern on dissabilitiy for holding socialization and voting simulation for dissabilities in some regions.
- **The People's Voter Education Network (JPPR)**
 - JPPR is one of the Indonesian accredited observer. JPPR submitted election observation reports which include results and recomendation for improvements.
 - One of the recomendation is making sure the polling station accessible for the voters with dissabilities.



**Disabilities Participants in Implementing of Simulation Ballot,
in the main Courtroom of KPU, 4 April 2014**



AWARD

KPU GETS AWARD FROM THE GOVERNMENT OF REPUBLIK INDONESIA FOR ITS EFFORT TO PROTECT AND FULFILLED POLITICAL RIGHTS FOR CITIZEN WITH DISSABILITIES





KOMISI
PEMILIHAN
UMUM

Thank You

